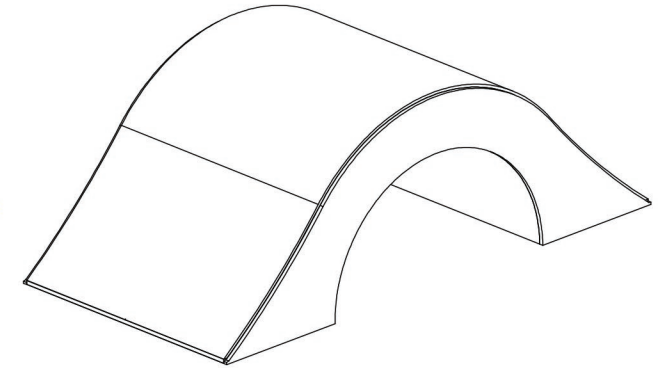
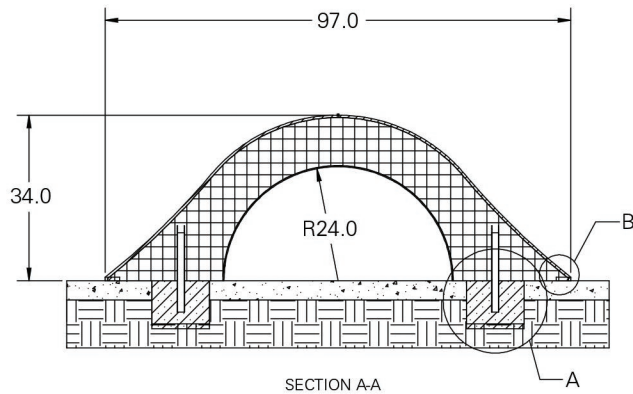


PlayMounds

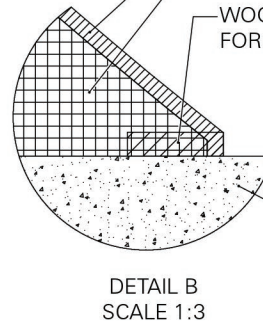
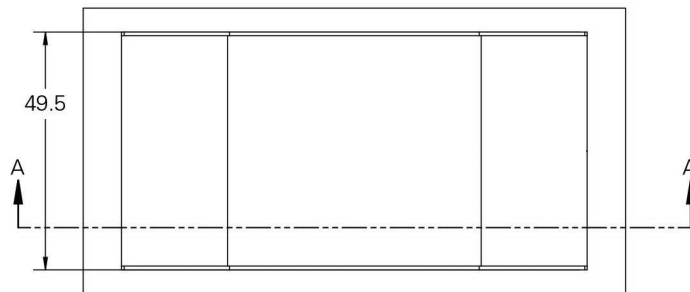
Standard Bridge



PlayMounds™ patent
pending Layering System
by ForeverLawn®

EPP PROTECTIVE FOAM LAYER
EPS GEO FOAM CORE

WOOD NAILER FOR SECURING
FOREVERLAWN TURF



GROUND ANCHORING SYSTEM

EPS GEO FOAM CORE

HDPE LINER

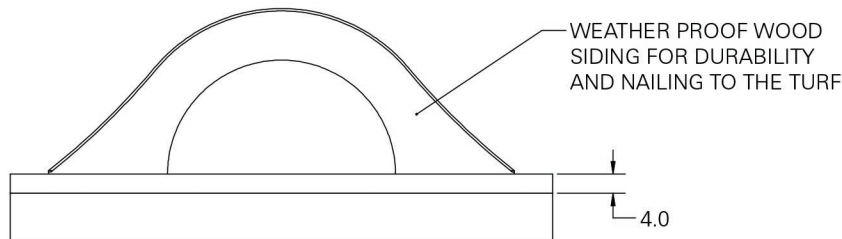
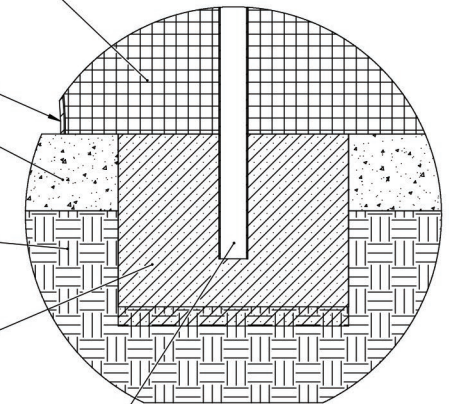
4" OF CRUSHED STONE

FILL DIRT

CONCRETE FOOTER

GALVANIZED STEEL POLE GLUED INTO
GEO FOAM WITH URETHANE EXPANDABLE
FOAM THEN SUNK INTO THE CONCRETE FOOTER

DETAIL A
SCALE 1:5



Units: Feet and inches

ForeverLawn®

866.992.7876 • foreverlawn.com
8007 Beeson St., Louisville, OH 44641



microsite.caddetails.com/1148

Material	Polystyrene	
Covering	Turf (sold separately)	
Weight	112 lb (152 lb turfed)	
Drawing No.	M1368	10/20